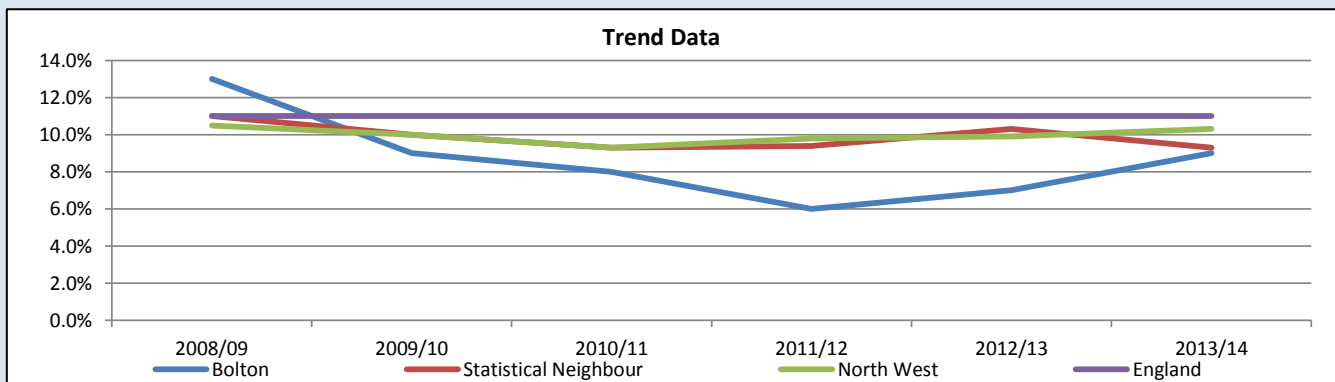


**LPI 123 Number of Placements during year**  
(former NI62 - now referred to as Placements 1)

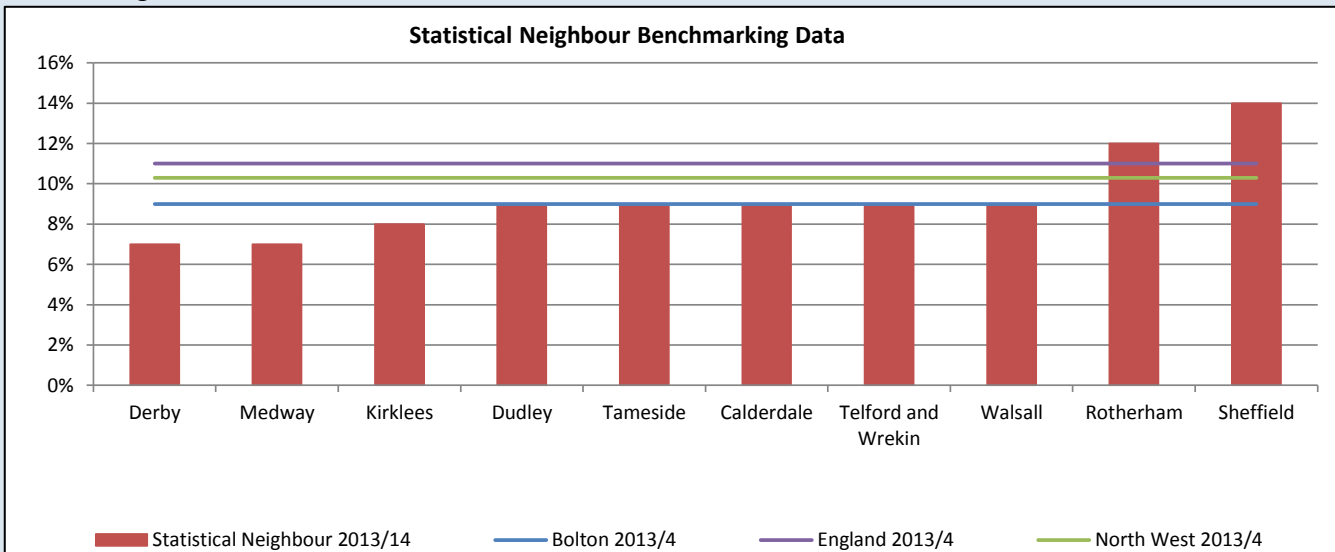
The percentage of children looked after at 31st March with three or more placements during the year.

**Trend and Current Picture <sup>1</sup>**

|                              | 2008/09 | 2009/10 | 2010/11 | 2011/12 | 2012/13 | 2013/14 |
|------------------------------|---------|---------|---------|---------|---------|---------|
| <b>Bolton</b>                | 13.0%   | 9.0%    | 8.0%    | 6.0%    | 7.0%    | 9.0%    |
| <b>Statistical Neighbour</b> | 11.0%   | 10.0%   | 9.3%    | 9.4%    | 10.3%   | 9.3%    |
| <b>North West</b>            | 10.5%   | 10.0%   | 9.3%    | 9.8%    | 9.9%    | 10.3%   |
| <b>England</b>               | 11.0%   | 11.0%   | 11.0%   | 11.0%   | 11.0%   | 11.0%   |



**Benchmarking Data <sup>2</sup>**



**Good performance is generally low. The original 2006/07 banding for this indicator describes very good performance as being between 0% and 16.01%**

**This indicator is an important measure of the stability of care that a child has experienced. It is now included in the Annual Children in Care and Adoption Performance Tables published by DfE where a 3 year average value is compared. For the 3 year average 2012-14, Bolton ranked 1st in England on this indicator.**

**Notes**

- 1 Data derived from DfE Children in Care and Adoption performance tables, updated 14th January 2015. Data relating to this indicator is contained in Placements 1.
- 2 DfE Children in Care and Adoption performance tables, Placements 1.