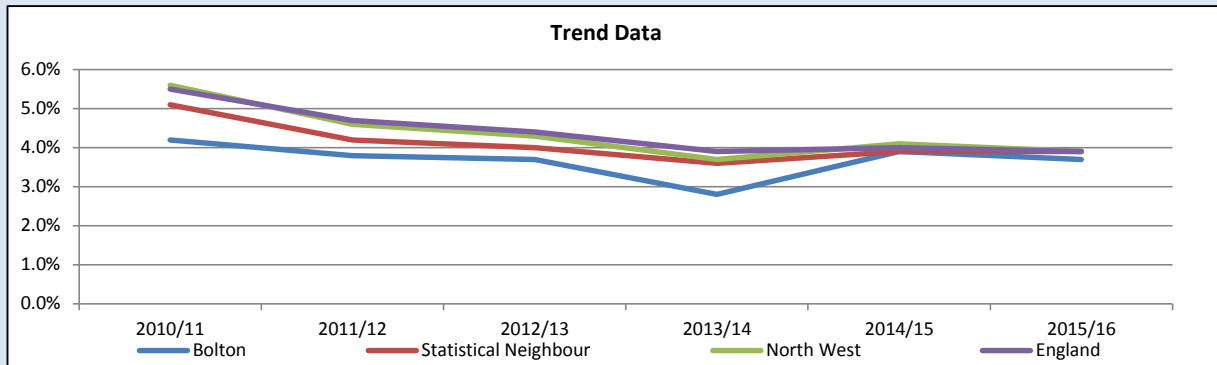


LPI 125 Absence from school of children who have been looked after continuously for at least 12 months

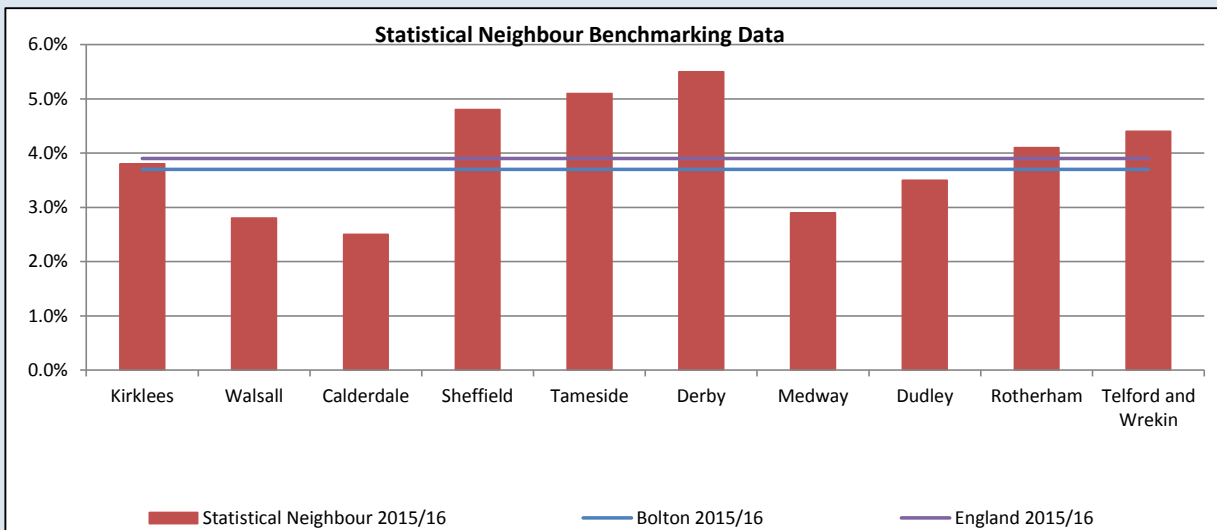
The percentage of sessions lost to overall absence (authorised and unauthorised) for children who had been looked after continuously for at least 12 months as at 31st March

Trend and Current Picture ¹

	2010/11	2011/12	2012/13	2013/14	2014/15	2015/16
Bolton	4.2%	3.8%	3.7%	2.8%	3.9%	3.7%
Statistical Neighbour	5.1%	4.2%	4.0%	3.6%	3.9%	3.9%
North West	5.6%	4.6%	4.3%	3.7%	4.1%	3.9%
England	5.5%	4.7%	4.4%	3.9%	4.0%	3.9%



Benchmarking Data ¹



A low percentage represents good performance.

Absence percentages are based on the number of sessions lost out of all possible sessions, rather than the number of children looked after. The percentage is calculated based on the total number eligible for full time schooling based on the CLA SDA903 return.

The overall absence rate for Looked After Children reduced steeply between 2009 and 2014. Bolton experienced a steeper rise than elsewhere in 2014/15 but has seen a reduction in 2015/16. The overall absence rate for all children in Bolton in 2015/16 was 3.9% and so the attendance of Looked After Children is better than all Bolton pupils. This indicator is important in monitoring school attendance of looked after children, as part of the overall aim to improve educational outcomes for children in care.

Notes

1

Data is published by DfE in Outcomes for children looked after (SFR 12/2017) Values shown are for overall absence of LAC in 5 half terms up to 2011/12 and in 6 half terms thereafter.